

CH10, CH20, CH30 CHAMBERS

BMD's CH10, CH20 and CH30 chambers are designed to be used with the series LC10 liquid level controller, but may also be used with other types of level switches and controllers. BMD offers two sizes of horizontal chambers, the CH10 and CH20 as well as a full line of vertical chambers (CH30). The upper dome portion of the CH30, vertical chamber can also be ordered separately for top entry into a vessel.

Chambers offer the benefit of isolating the process fluid from the turbulence of the main vessel making for a more accurate level measurement. They are also an excellent choice for situations where the main vessel's internal geometry may block the direct installation of a level controller. BMD's CH30 vertical chambers are fully customizable to meet many process piping sizes and connections.

Specifications

CH10 and CH20

Sizes:

Controller Connection: 2" NPT

Process Connection: 1" NPT

Pressure Rating:

2000 psi

Materials:

Carbon Steel or Stainless (Optional)

CH30

Sizes:

Chamber: 3" and 4"

Controller Connection: 2" NPT or Flanged

Process Connection: 1", 1 1/2" and 2"

Pressure Rating:

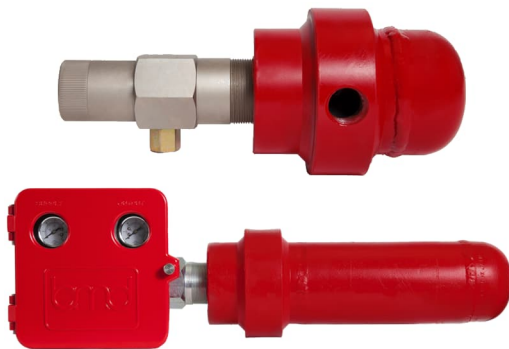
Flanged: Up to 1500 Class

Threaded: 600 Class Standard, Higher Rating Available by Request.

Materials:

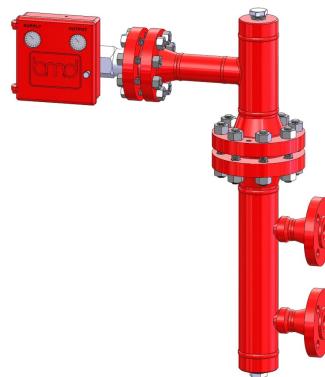
Carbon Steel or Stainless (Optional)

CH20

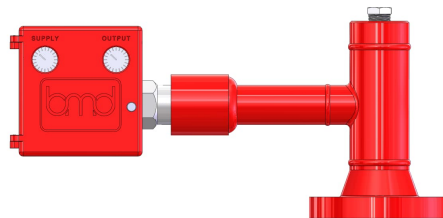


CH10

CH30



CH30 (Dome Only)



How to Order

Example Model No. CH10-C

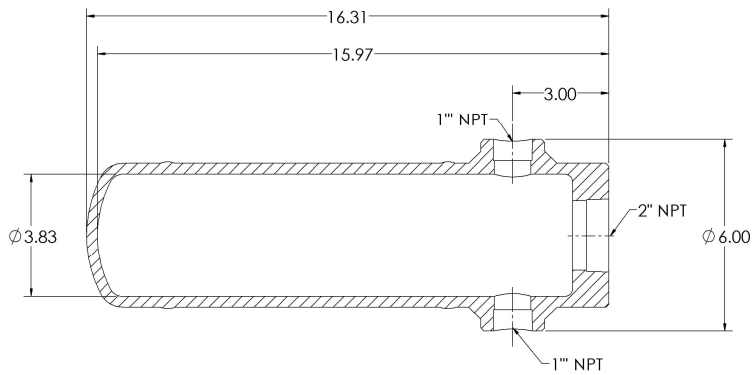
CH10 Series Horizontal Chamber, Carbon Steel, 2" NPT

Controller Connection, 1" NPT Process Connection.

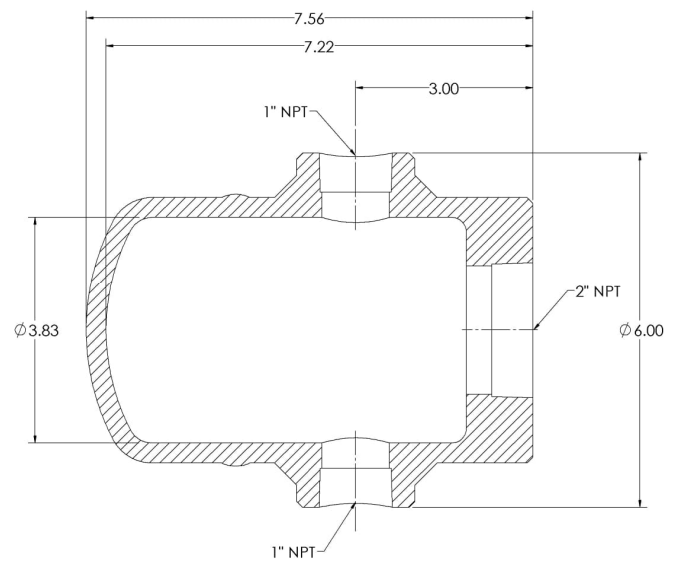
<u>CH10</u>	<u>CH20</u>
CH10-C - Carbon Steel	CH20-C - Carbon Steel
CH10-T - Stainless Steel	CH20-T - Stainless Steel

Dimensions

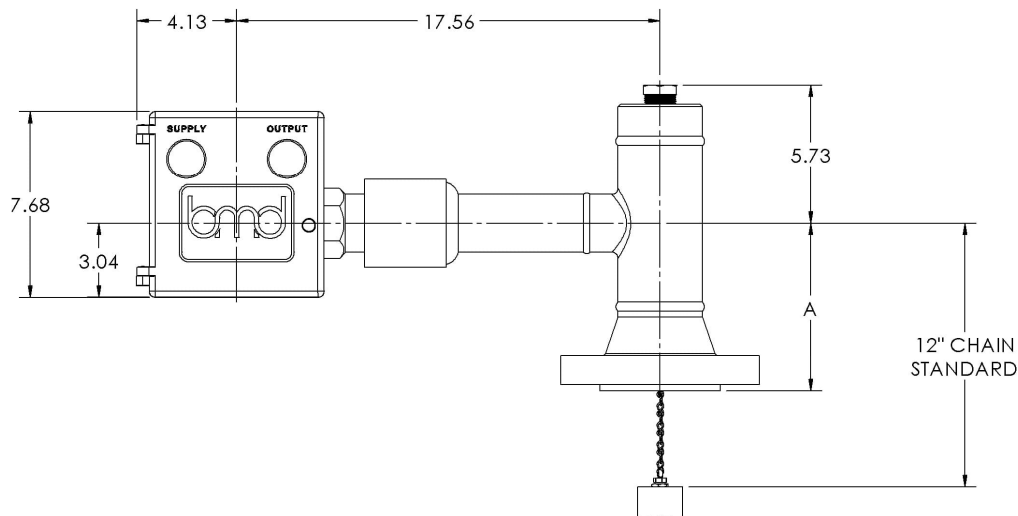
CH10



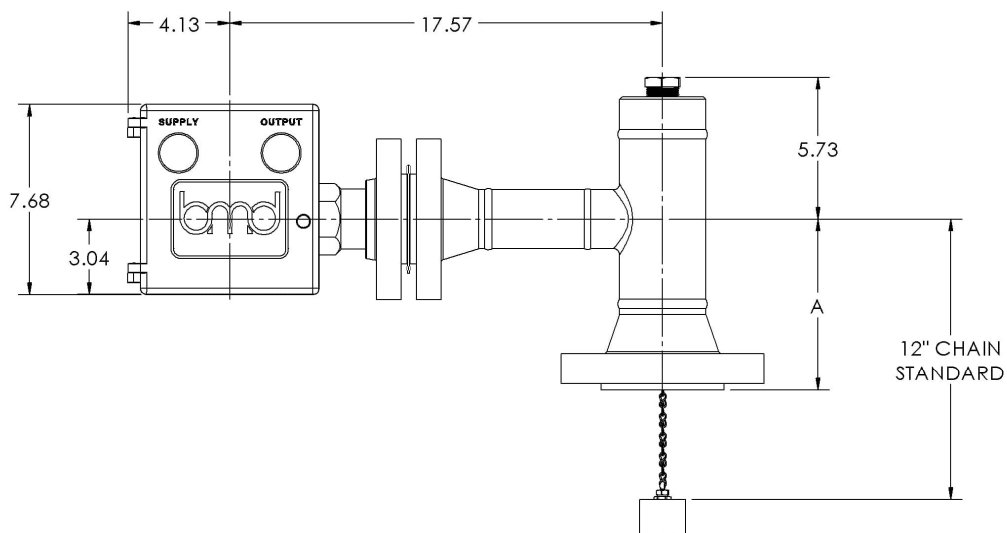
CH20



CH30 (NPT Dome Only)



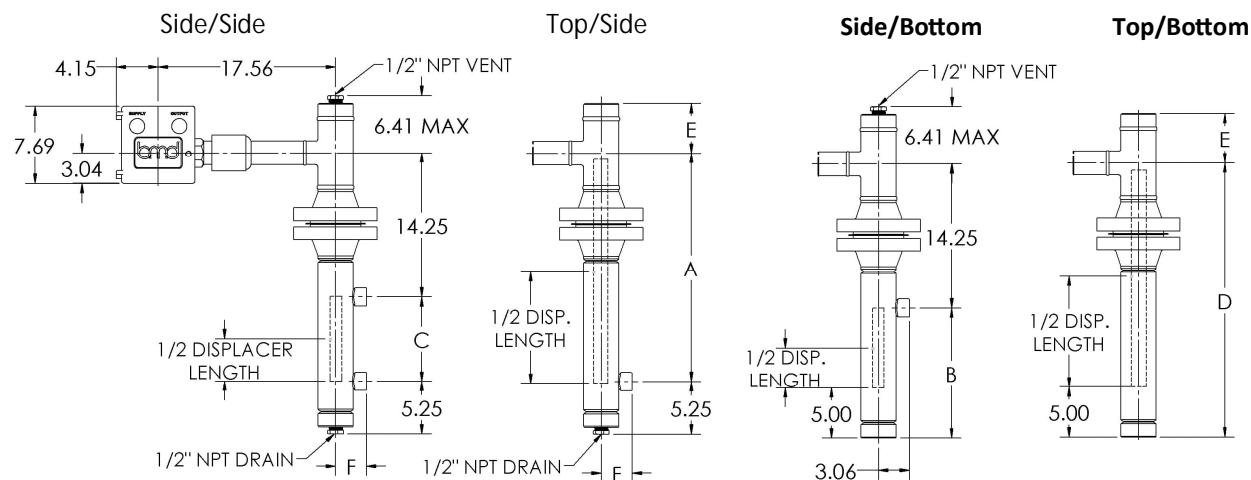
CH30 (Flanged Dome Only)



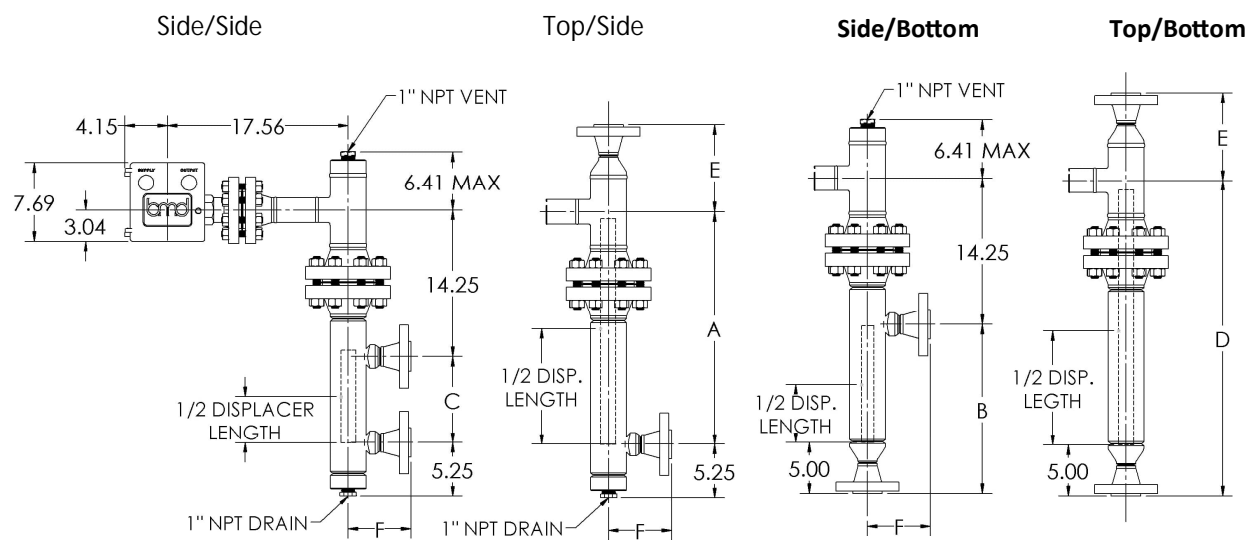
Dimension A		
Flange Class	Dome Size	
	3"	4"
150 RF	6.19	7.19
300 RF	6.56	7.56
600 RF	6.93	8.44
600 RTJ	7.00	8.50
900 RF	7.69	8.94
900 RTJ	7.75	9.00
1500 RF	8.31	9.31
1500 RTJ	8.38	9.38
2500 RF	10.31	11.69
2500 RTJ	10.37	11.75

CH30 Dimensions

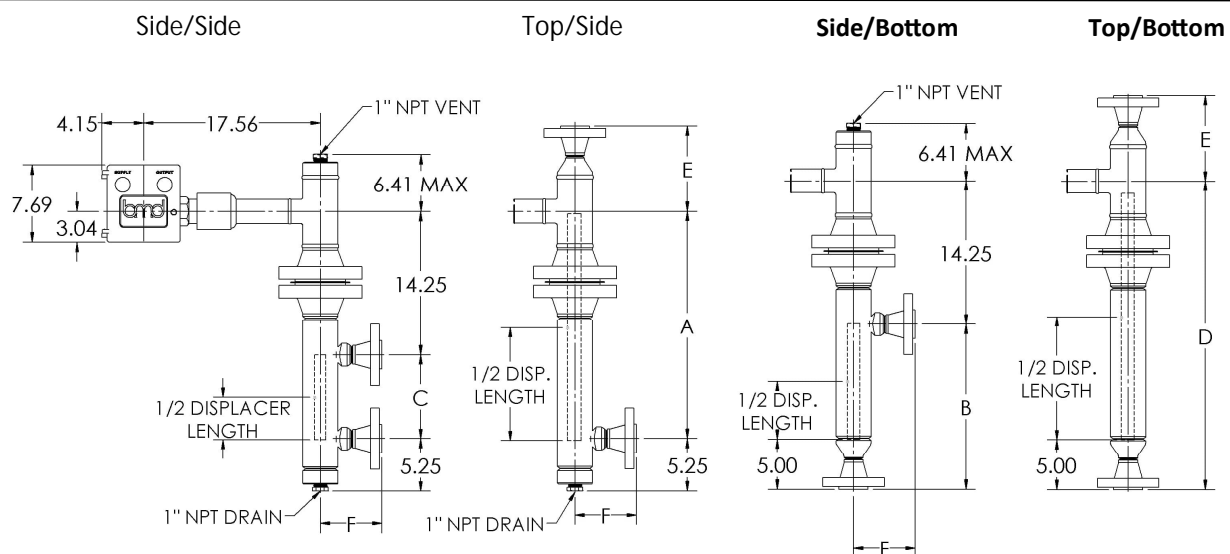
Threaded Level Controller with Threaded Vessel Connection



Flanged Level Controller with Flanged Vessel Connection



Threaded Level Controller with Flanged Vessel Connection



(Flanged Level Controller with Threaded Vessel Connection also available.)

